

**STANDARD DEPARTURE CHART
INSTRUMENT (SID) - ICAO**

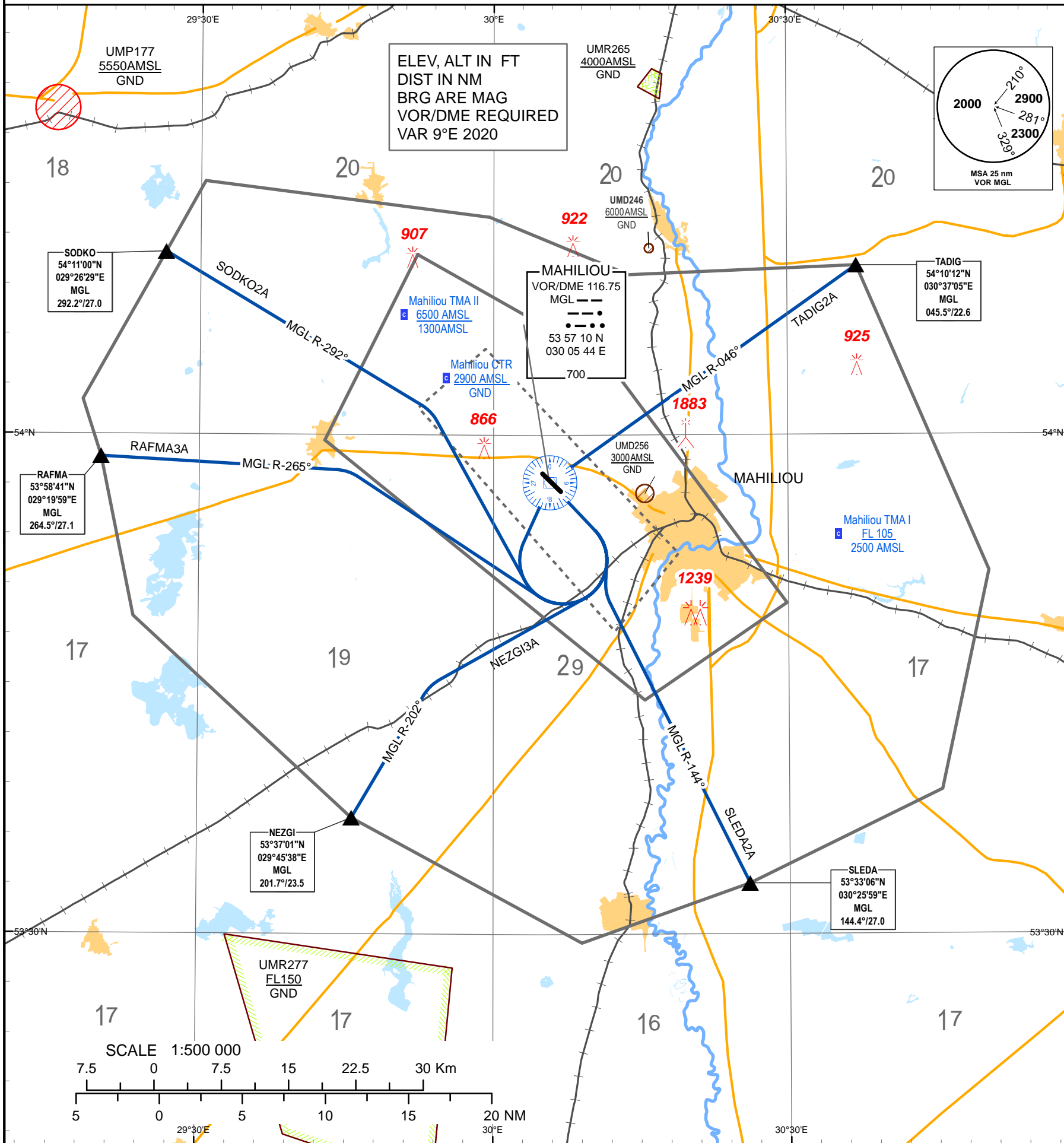
TRANSITION ALTITUDE
6000

Alt set: - hPa (mm on req)
-QNH (QFE on req)

TWR 127.100
MET 118.075 (EN)
126.200 (RUS)

**MAHILIOU
RWY 13**

**NEZGI3A, RAFMA3A, SLEDA2A
SODKO2A, TADIG2A**



**STANDARD INSTRUMENT DEPARTURE (SID) ROUTES
MAHILIOU RWY 13**

SID NAME	ROUTE
NEZGI 3A	NEZGI THREE ALFA Climb straight ahead to 1300 (675) or above, turn RIGHT 232° track to intercept MGL VOR R-202° and proceed to NEZGI.
RAFMA 3A	RAFMA THREE ALFA Climb straight ahead to 1300 (675) or above, turn RIGHT 295° track to intercept MGL VOR R-265° and proceed to RAFMA.
SLEDA 2A	SLEDA TWO ALFA Climb straight ahead to 1300 (675) or above, turn RIGHT to intercept MGL VOR R-144° and proceed to SLEDA.
SODKO 2A	SODKO TWO ALFA Climb straight ahead to 1300 (675) or above, turn RIGHT 322° track to intercept MGL VOR R-292° and proceed to SODKO.
TADIG 2A	TADIG TWO ALFA Climb straight ahead to 1300 (675) or above, turn RIGHT to MGL VOR. To intercept MGL VOR R-046° and proceed to TADIG.

CHANGE: Magnetic VAR.

THIS PAGE INTENTIONALLY LEFT BLANK